

INAS

INTERNATIONAL NETWORK OF
ANALYTICAL SOCIOLOGY



A guide for your stay in Leipzig



UNIVERSITÄT
LEIPZIG

16th INAS
Conference
May 30–31, 2024

A selection of accommodation in walking distance

Pension Piano Forte (55€/night)

Shakespearestr. 2, 04107 Leipzig
T: +49 174 1310 133
W: <https://pensionpianoforte.com/>

* **Hotel am Bayrischen Platz** (98€ or 118€/night)

Paul-List-Straße 5, 04103 Leipzig
T: +49 (0)341 14086-0
W: <https://hotel-am-bayrischen-platz.de/>

Gästehaus Leipzig (from 99€/night)

Wächterstr. 32, 04107 Leipzig
T: +49 (0)341 9999 0600
W: www.gaestehaus-leipzig.de

* **a&o Hotel Leipzig Hauptbahnhof**

(~155€ / night) booking code: L1-344821

Brandenburger Straße 2, 04103 Leipzig
T: +49 (0)30 80947 5110
W: www.aohostels.com

Best Western Hotel Leipzig City Center (from 115€/night)

Garni Kurt-Schumacher-Str. 3, 04105 Leipzig
T: +49 (0)341 125 10
W: www.bestwestern-leipzig.de

Dorint Hotel Leipzig (from 120€/night)

Stephanstr. 6, 04103 Leipzig
T: +49 (0)341 977 90
W: www.hotel-leipzig.dorint.com

Motel One Leipzig (from 145€/night)

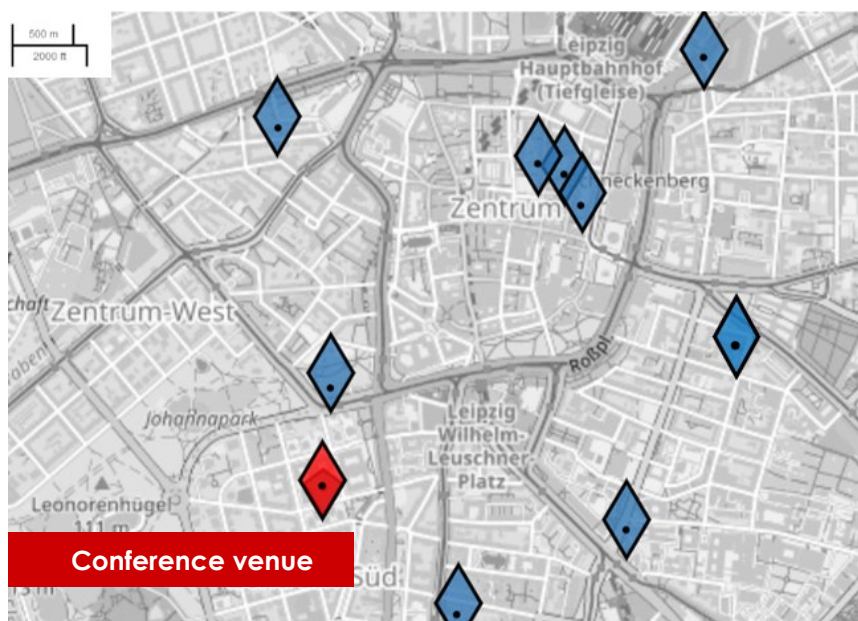
Ritterstr. 4, 04109 Leipzig
T: +49 (0)341 2527 980
W: www.motel-one.com/hotel-leipzig-augustusplatz

Nikolaistr. 23, 04109 Leipzig
T: +49 (0)341 3374 370
W: www.motel-one.com/hotel-leipzig-nikolaikirche

Grimmaischer Steinweg 1, 04103 Leipzig
T: +49 (0)341 9621 050
W: www.motel-one.com/hotel-leipzig-post

INNSiDE Leipzig (from 150€/night)

Gottschedstr. 1, 04109 Leipzig
T: +49 (0)341 3937 670
W: www.melia.com/leipzig/innside-leipzig



* Leipzig University offers discounted rooms

You can find numerous (group) accommodations on **Airbnb**: <https://www.airbnb.de>

Venue Bibliotheca Albertina / Institute of Sociology
Beethovenstrasse 6 / 15, 04107 Leipzig

Contact inas2024@uni-leipzig.de

Things to see on the weekend



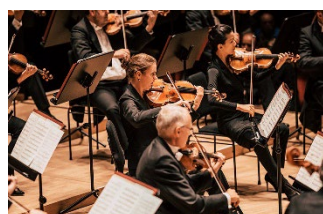
Völkerschlachtdenkmal

Shows militarization of German society before WW1 in the way they celebrated the centennial of Napoleon's defeat in Leipzig. <https://www.stadtgeschichtliches-museum-leipzig.de/besuch/unsere-haeuser/voelkerschlachtdenkmal-forum-1813/>



Nikolaikirche

The oldest and largest church in Leipzig's city center and, along with St. Thomas, the city's most famous church. Hotspot of 1989's peaceful revolution; see also: <https://www.jstor.org/stable/2096280?seq=9>



Zeitgeschichtliches Forum

Museum on German history from the end of WW2 to the present day. Free entrance to the museum and the exhibitions. <https://www.hdg.de/zeitgeschichtliches-forum>

Leipzig - City of Music

Visit St. Thomas Church, where Johann Sebastian Bach built his career. Catch a performance from the famous Gewandhausorchester at the Gewandhaus (if you're lucky you can still get tickets at the box evening office). <https://www.gewandhausorchester.de/d/2024-5-31/>



Lunch on Eisenbahnstraße

Has a reputation of Germany's most dangerous street, but it is more an example of an ethnic enclave interwoven with hipster culture. Good Turkish food: Brothers Bakery & Café. <https://unofficial.pictures/en/dangerous/>

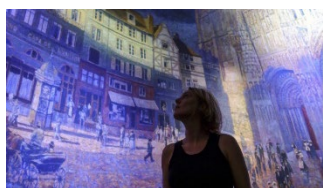


Baumwollspinnerei

From cotton to culture: The former factory has become an important production and exhibition site for contemporary art. Visit for example Neo Rauch's gallerist. <https://www.spinnerei.de/>

Gaststätte Kollektiv

On the famous Karl-Liebknecht-Straße. Travel back in time to the aesthetic charm and culinary highs and lows of the GDR. <https://gaststaette-kollektiv.de/>



Apéro on Karl-Heine-Strasse

Gentrification and the left-green milieu. Beer garden: Zum Wilden Heinz. Cafés and music: Westwerk. <https://westwerk-leipzig.de/startseite/>

Panometer Leipzig

The Panometer has been presenting the world's largest 360° panoramas since 2003. The current exhibition features works by Claude Monet <https://www.panometer.de/en/homepage>



Sachsenbrücke in Clara-Zetkin-Park

Have a stroll in one of Leipzig's beautiful parks near the venue. Sachsenbrücke has ice cream and coffee vendors and, in the evenings, street music. Beer & café garden: Musikpavillon Leipzig. <https://musikpavillon-leipzig.de/>